



CITY OF LANGLEY | Environmentally Sensitive Areas (ESA) Mapping

CONTEXT

Natural areas and features have many benefits beyond their intrinsic value. The Environmentally Sensitive Areas Map provides an awareness of what exists and what condition it is in. Once understood, this information can be used by the City to meet many other sustainability objectives, including:

- Developing a green infrastructure network;
- Reducing flood risk and improving stormwater management (permeable surfaces, rainwater collection/infiltration);
- Improving biodiversity (significant habitat, landscape connectivity, etc);
- Offering new and/or improved recreational opportunities (greenways, parks, trails);
- Supporting community health (access to/views of nature);
- Increasing food production (natural pollinators, fruit trees, etc); and,
- Adapting to climate change (carbon sequestration, combating urban heat island effect).

MANAGEMENT - NEXT STEPS

For the next stage of this project, a full suite of ecological management strategies will be explored.

These will expand upon key issues the City has already identified (i.e. preservation and enhancement of ecological features in public urban areas.

Strategies presented will reflect the City's unique ecological conditions, risks, opportunities and constraints, land use, and regulatory environment.

These strategies should also be proven and cost-effective so that they can effectively support, inform or be incorporated into other City plans and initiatives such as parks plans and stormwater management plans.

ISSUES

A variety of policies and regulations, from all levels of government, are in place to manage and protect natural features and ecosystem values. The updated ESA study will consider:

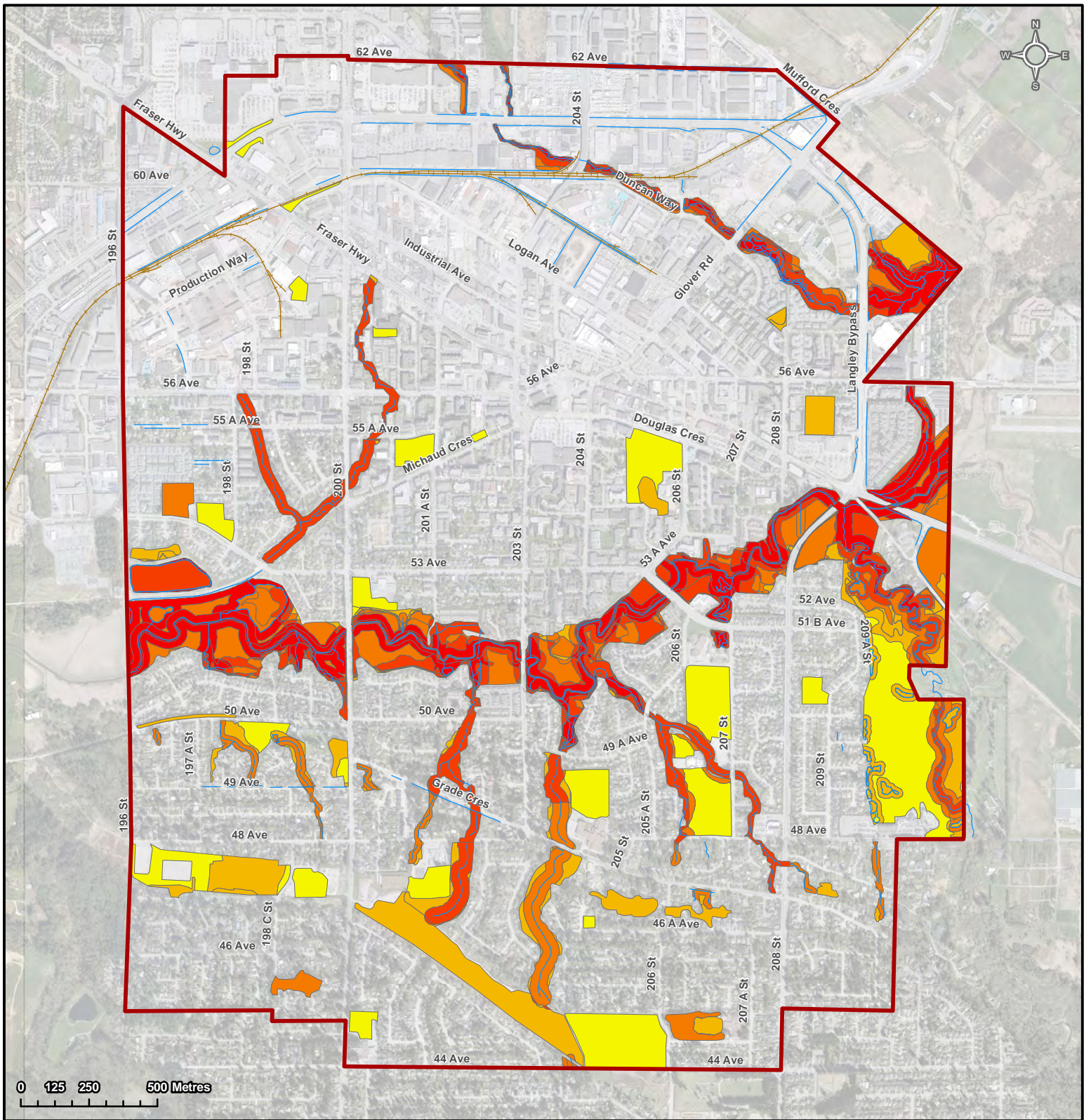
1. CHANGES TO LEGISLATION

Recent changes to legislation (such as the federal Fisheries Act) which may influence how certain values are managed in the City of Langley.




2. REGULATORY UPDATES NEEDED

The City's policies and bylaws may need to be updated to respond effectively to changing regulatory conditions, anticipated future challenges (e.g. climate change), and to balance community development and environmental protection objectives.






Take a look at the ENVIRONMENTALLY SENSITIVE AREAS MAP, and place a sticker on natural areas in the City that you feel have high value, or on any additional valued natural areas that should be included on the map.



Legend

-  City of Langley Boundary
-  Watercourses
-  Railway

Values

-  Low
-  Moderately Low
-  Moderate
-  Moderately High
-  High

Environmentally Sensitive Areas

Project:
Langley ESA Mapping Study

Client:
City of Langley



Drawn By: D. Lishman and C. Lefrancois

Date: Oct. 29, 2015

Ortho Year: 2014

